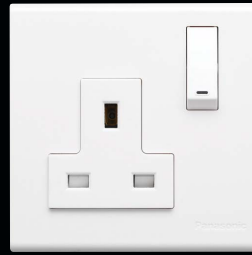


Sharp design fitting beautifully with residential atmosphere as well as business environment.



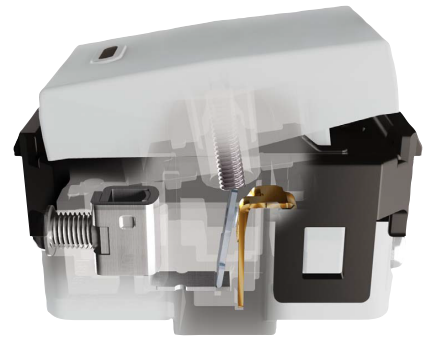
FULL-COLOR
WIDE BS-TYPE
SERIES

MAKES A STATEMENT IN STYLE



Modern and square plate bringing a fresher taste to your interior with a wide range of items covering residential and commercial facility needs.

TROUBLE-FREE SWITCHING MECHANISM



Advanced combination of high-conductivity heat-resistant copper, coil spring and outstanding resistant silver alloy contacts.

HIGHLY RELIABLE SAFETY FEATURES



- European RoHS directive compliant, completely free from Cd, Hg, Cr6+, Pb, PBBs, PBDEs.
- Fire retardant material in use to prevent core components from burning.
- SASO Quality Marking and EQM compliant.

FULL-COLOR WIDE SERIES BS-TYPE

Switches

WEBP515117

1-Gang 1Way Switch, 16AX 250V with Plate



WEBP525217

1-Gang 2-Devices 1Way Switch, 16AX 250V with Plate



WEBP535317

1-Gang 3-Devices 1Way Switch, 16AX 250V with Plate



WEBP515127

1-Gang 2Way Switch, 16AX 250V with Plate



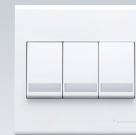
WEBP525227

1-Gang 2-Devices 2Way Switch, 16AX 250V with Plate



WEBP535327

1-Gang 3-Devices 2Way Switch, 16AX 250V with Plate



WNG5001W-791

1Way Switch, 15AX 250V

WZB7831WK (Plate)

1-Gang 1-Device



Combination Model number
WNBP5110630F

WNG5001W-791 X 2

1Way Switch, 15AX 250V

WZB7832WK (Plate)

1-Gang 2-Device



Combination Model number
WNBP5120630F

WNG5001W-791 X 3

1Way Switch, 15AX 250V

WZB7833WK (Plate)

1-Gang 3-Device



Combination Model number
WNBP5130630F

WNG5001W-791 X 4

1Way Switch, 15AX 250V

WZB7834WK (Plate)

2-Gang 4-Device



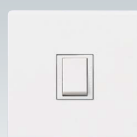
Combination Model number
WNBP5140630F

WNG5002W-791

2Way Switch, 15AX 250V

WZB7831WK (Plate)

1-Gang 1-Device



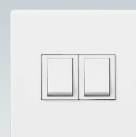
Combination Model number
WNBP5210630F

WNG5002W-791 X 2

2Way Switch, 15AX 250V

WZB7832WK (Plate)

1-Gang 2-Device



Combination Model number
WNBP5220630F

WNG5002W-791 X 3

2Way Switch, 15AX 250V

WZB7833WK (Plate)

1-Gang 3-Device



Combination Model number
WNBP5230630F

WNG5002W-791 X 4

2Way Switch, 15AX 250V

WZB7834WK (Plate)

2-Gang 4-Device



Combination Model number
WNBP5240630F

DIMENSIONS of Applicable Box



Plate : 86 × 86 mm
 Box : 72 × 72 mm
 Fixing Center : 60.3 mm



Plate : 86 × 146 mm
 Box : 72 × 132 mm
 Fixing Center : 120.6 mm

WNG5021W-7

1Way Twin Switch, 10AX 250V

WZB7831WK (Plate)

1-Gang 1-Device



Combination Model number
WNBP5101610F

WNG5021W-7 X 2

1Way Twin Switch, 10AX 250V

WZB7832WK (Plate)

1-Gang 2-Device



Combination Model number
WNBP5141610F

WNG5021W-7 X 4

1Way Twin Switch, 10AX 250V

WZB7834WK (Plate)

2-Gang 4-Device



Combination Model number
WNBP5181610F

WEG5534

Intermediate Switch, 4Way, 16A 250V

WEB7811W (Plate)

1-Gang 1-Device



Combination Model number
WEBP5513630F

WEG5401-7-P

Push Button, 10AX 250V

WEB7811W (Plate)

1-Gang 1-Device



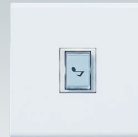
Combination Model number
WEBP5113650F

WNG5461W-7

Appellation Push Button "B"
 SP 10A 250V

WZB7831WK (Plate)

1-Gang 1-Device



Combination Model number
WNBP5113660F

WNG5461W-7 X 2

Appellation Push Button "B"
 SP 10A 250V

WZB7832WK (Plate)

1-Gang 2-Device



Combination Model number
WNBP5123660F

WEG553272

20A 2Way SP Switch

WEB7811W (Plate)

1-Gang 1-Device



Combination Model number
WEBP5214730F

WEG55337

20A DP Switch with Indicator

WEB7811W (Plate)

1-Gang 1-Device



Combination Model number
WEBP5414600F

WBG5414699W-SP

20A DP Switch with Indicator

WZB7831WK (Plate)

1-Gang 1-Device



Combination Model number
WNBP5414600F

WBG5414699W

20A DP Switch with Indicator
 (A/C)

WZB7831WK (Plate)

1-Gang 1-Device



Combination Model number
WNBP5414690F

WNG5343W-761

20A DP Switch with Indicator
 (Water Heater)

WZB7831WK (Plate)

1-Gang 1-Device



Combination Model number
WNBP5414630F

WBG5408699W

45A DP Switch with Indicator

WZB7832WK (Plate)

1-Gang 2-Device



Combination Model number
WNBP5428690F

WBG5408699W

45A DP Switch with Indicator

WZB7817W (Plate)

2-Gang 2-Device



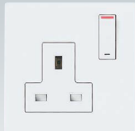
Combination Model number
WNBP5448690F

FULL - COLOR WIDE SERIES BS - TYPE

Socket Outlets

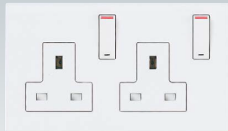
WEB1111W

13A 250V 1-Gang DP Switched
Socket Outlet with Plate



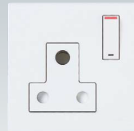
WEB1112W

13A 250V 2-Gang DP Switched
Socket Outlet with Plate



WEB1131W

15A 250V 1-Gang Switched Round
Pin Outlet with Plate
(Non SASO Standard)



WEG11517

3Wire Grounding Socket Outlet
15A 127V

WEB7812W (Plate)

1-Gang 2-Device



Combination Model number
WEBP1619610F

WNG1101W-791

15A 127V 3Wire Grounding Socket

WZB7831WK (Plate)

1-Gang 1-Device



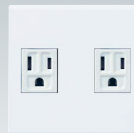
Combination Model number
WBNP1619600F

WNG1101W-791 X 2

15A 127V 3Wire Grounding Socket

WZB78322W (Plate)

1-Gang 2-Device



Combination Model number
WBNP1629630F

WEG10817

Universal Socket with Shutter
(Non SASO Standard)

WEB7811W (Plate)

1-Gang 1-Device



Combination Model number
WEBP1914610F

WEG10817 X 2

Universal Socket with Shutter
(Non SASO Standard)

WEB7812W (Plate)

1-Gang 2-Device



Combination Model number
WEBP1924610F

WEG10817 X 3

Universal Socket with Shutter
(Non SASO Standard)

WEB7813W (Plate)

1-Gang 3-Device



Combination Model number
WEBP1934610F

WEG10817

Universal Socket with Shutter
(Non SASO Standard)

WEG55317

1Way Switch 16AX 250V

WEB7812W (Plate)

1-Gang 2-Device



Combination Model number
WEBP5120632F

WEG10817

Universal Socket with Shutter
(Non SASO Standard)

WEG55317 X 2

1Way Switch 16AX 250V

WEB7813W (Plate)

1-Gang 3-Device



Combination Model number
WEBP5130632F

WEG15827

Grounding Universal Socket
(Non SASO Standard)

WEB7813W (Plate)

1-Gang 3-Device



Combination Model number
WEBP1824710F

WEG11817

Universal Multi Socket with
Safety Shutter (Non SASO Standard)

WEB7812W (Plate)

1-Gang 2-Device



Combination Model number
WEBP1814710F

DIMENSIONS of Applicable Box



Plate : 86 × 86 mm
 Box : 72 × 72 mm
 Fixing Center : 60.3 mm



Plate : 86 × 146 mm
 Box : 72 × 132 mm
 Fixing Center : 120.6 mm

Accessories

WEG2364

Telephone Socket 6P4C

WEB7811W (Plate)

1-Gang 1-Device



Combination Model number
WEBP4519940F

WEG2364 X 2

Telephone Socket 6P4C

WEB7812W (Plate)

1-Gang 2-Device



Combination Model number
WEBP4529940F

WEG2501-P

TV Socket DIN Type

WEB7811W (Plate)

1-Gang 1-Device



Combination Model number
WEBP4719830F

WEG2501-P X 2

TV Socket DIN Type

WEB7812W (Plate)

1-Gang 2-Device



Combination Model number
WEBP4729830F

WE2731-8

TV Socket F Type

WEB7811W (Plate)

1-Gang 1-Device



Combination Model number
WEBP47194501F

WE2731-8 X 2

TV Socket F Type

WEB7812W (Plate)

1-Gang 2-Device



Combination Model number
WEBP47294501F

WEG2364

Telephone Socket 6P4C

WEG2501-P

TV Socket DIN Type

WEB7812W (Plate)

1-Gang 2-Device



Combination Model number
WEBP4529942F

WEG2364

Telephone Socket 6P4C

WE2731-8

TV Socket F Type

WEB7812W (Plate)

1-Gang 2-Device



Combination Model number
WEBP47194501F

WEG2488-P

Cat 5E Outlet

WEB7811W (Plate)

1-Gang 1-Device



Combination Model number
WEBP4519980F

WEG2488-P X 2

Cat 5E Outlet

WEB7812W (Plate)

1-Gang 2-Device



Combination Model number
WEBP4529980F

WEG24886-P

Cat 6 Outlet

WEB7811W (Plate)

1-Gang 1-Device



Combination Model number
WEBP4519680F

WEG24886-P X 2

Cat 6 Outlet

WEB7812W (Plate)

1-Gang 2-Device



Combination Model number
WEBP4529680F

Dimmer Switches

WEG57515-P

220V 500W Dimmer

WEB7811W (Plate)

1-Gang 1-Device



Combination Model number
WEBP5716350F

WEG57515-P X 2

220V 500W Dimmer

WEB7812W (Plate)

1-Gang 2-Device



Combination Model number
WEBP5726350F

WEG578153

500W Low Voltage Dimmer

WEB7812W (Plate)

1-Gang 2-Device



Combination Model number
WEBP5781530F

WEG5781103

220V 1000W Dimmer

